

ID	Task Mo	Task Name	Duration	Start	Finish	Predecessors	Successors	Actual Start	Actual Finish	2016																	
										July 3					July 10					July 17				July 24			
										Sat	Sun	Mon	Tue	Wed	Thu	Fri	Sat	Sun	Mon	Tue	Wed	Thu	Fri	Sat	Sun	Mon	Tue
0		Craftsbury Schedule 3-7-16	147.07 da	Tue 11/24/15	Fri 9/30/16			Tue 11/24/15	NA																		
1	✓	Craftsbury BO 1449 (39)	0 days	Fri 12/18/15	Fri 12/18/15			Fri 12/18/15	Fri 12/18/15																		
2	✓	Received Acceptance Letter	0 days	Fri 12/18/15	Fri 12/18/15		36,5,8,52,14,20	Fri 12/18/15	Fri 12/18/15																		
3		Submittals	93.14 day	Tue 11/24/15	Thu 7/7/16			Tue 11/24/15	NA																		
4		Project Schedule	55 days	Tue 1/5/16	Wed 5/18/16			Tue 1/5/16	NA																		
5	✓	Submit Schedule for approval	0 days	Tue 1/5/16	Tue 1/5/16	2	6	Tue 1/5/16	Tue 1/5/16																		
6		Schedule Approval Period	55 days	Tue 1/5/16	Wed 5/18/16	5	61	NA	NA																		
7		Traffic Control Plan	55 days	Fri 1/29/16	Mon 6/13/16			Fri 1/29/16	NA																		
8	✓	Traffic Control Plan- Sent	0 days	Fri 1/29/16	Fri 1/29/16	2	9	Fri 1/29/16	Fri 1/29/16																		
9		Traffic Control Plan Approval Period	55 days	Fri 1/29/16	Mon 6/13/16	8	61	NA	NA																		
10		EPSC Plan	55 days	Mon 2/8/16	Wed 6/22/16			Mon 2/8/16	NA																		
11	✓	EPSC Plan- Sent	0 days	Mon 2/8/16	Mon 2/8/16		12	Mon 2/8/16	Mon 2/8/16																		
12		EPSC Approval Period	55 days	Tue 2/9/16	Wed 6/22/16	11	61	NA	NA																		
13		Steel- Casco	93.14 day	Tue 11/24/15	Thu 7/7/16			Tue 11/24/15	NA																		
14	✓	Steel Award	0 days	Tue 11/24/15	Tue 11/24/15	2	15	Tue 11/24/15	Tue 11/24/15																		
15		Prepare Steel Submittal	20 days	Tue 11/24/15	Mon 1/11/16	14	16	NA	NA																		
16	✓	Steel Submittal	0 days	Fri 2/12/16	Fri 2/12/16	15	17	NA	NA																		
17		Steel Approval Period	20 days	Fri 2/12/16	Thu 3/31/16	16	18	NA	NA																		
18		Steel Lead Time	40 days	Fri 4/1/16	Thu 7/7/16	17		NA	NA																		
19		Precast- Carrara	83.14 day	Thu 12/10/15	Thu 6/30/16			Thu 12/10/15	NA																		
20	✓	Precast Award	0 days	Thu 12/10/15	Thu 12/10/15	2	21	Thu 12/10/15	Thu 12/10/15																		
21	✓	Prepare Precast Submittal	33.71 days	Thu 12/10/15	Tue 3/1/16	20	22,23,24	Thu 12/10/15	Tue 3/1/16																		
22	✓	Abutment Submittal	0 days	Tue 3/1/16	Tue 3/1/16	21	25	Tue 3/1/16	Tue 3/1/16																		
23	✓	Wingwall Submittal	0 days	Tue 3/1/16	Tue 3/1/16	21	26	Tue 3/1/16	Tue 3/1/16																		
24	✓	PBU Submittal	0 days	Tue 3/1/16	Tue 3/1/16	21	27	Tue 3/1/16	Tue 3/1/16																		
25		Abutment Approval Period	14.29 day	Tue 3/1/16	Mon 4/4/16	22	28	NA	NA																		
26		Wingwall Approval Period	14.29 day	Tue 3/1/16	Mon 4/4/16	23	29	NA	NA																		
27		PBU Approval Period	14.29 day	Tue 3/1/16	Mon 4/4/16	24	30	NA	NA																		
28		Abutment Lead Time	35.71 day	Tue 4/5/16	Thu 6/30/16	25		NA	NA																		
29		Wingwall Lead Time	35.71 day	Tue 4/5/16	Thu 6/30/16	26		NA	NA																		
30		PBU Lead Time	35.71 day	Tue 4/5/16	Thu 6/30/16	27		NA	NA																		
31		Rebar for Deck	15 days	Thu 12/10/15	Fri 1/15/16			Thu 12/10/15	NA																		
32	✓	Rebar Award	0 days	Thu 12/10/15	Thu 12/10/15	2	33	Thu 12/10/15	Thu 12/10/15																		
33		Material Lead Time	14.29 days	Thu 12/10/15	Wed 1/13/16	32	34	NA	NA																		
34		Material On Site	0.71 days	Thu 1/14/16	Fri 1/15/16	33		NA	NA																		
35		Guardrail and Post- Lafayette	55.57 day	Fri 12/18/15	Wed 5/4/16			Fri 12/18/15	NA																		

Vermont Agency of Transportation
Reviewed by: A. Gammell
Date: 4-7-16
 CONFORMING
 CONFORMING AS NOTED
 NON-CONFORMING - RESUBMIT

Steel Lead Time

Abutment Lead Time

Wingwall Lead Time

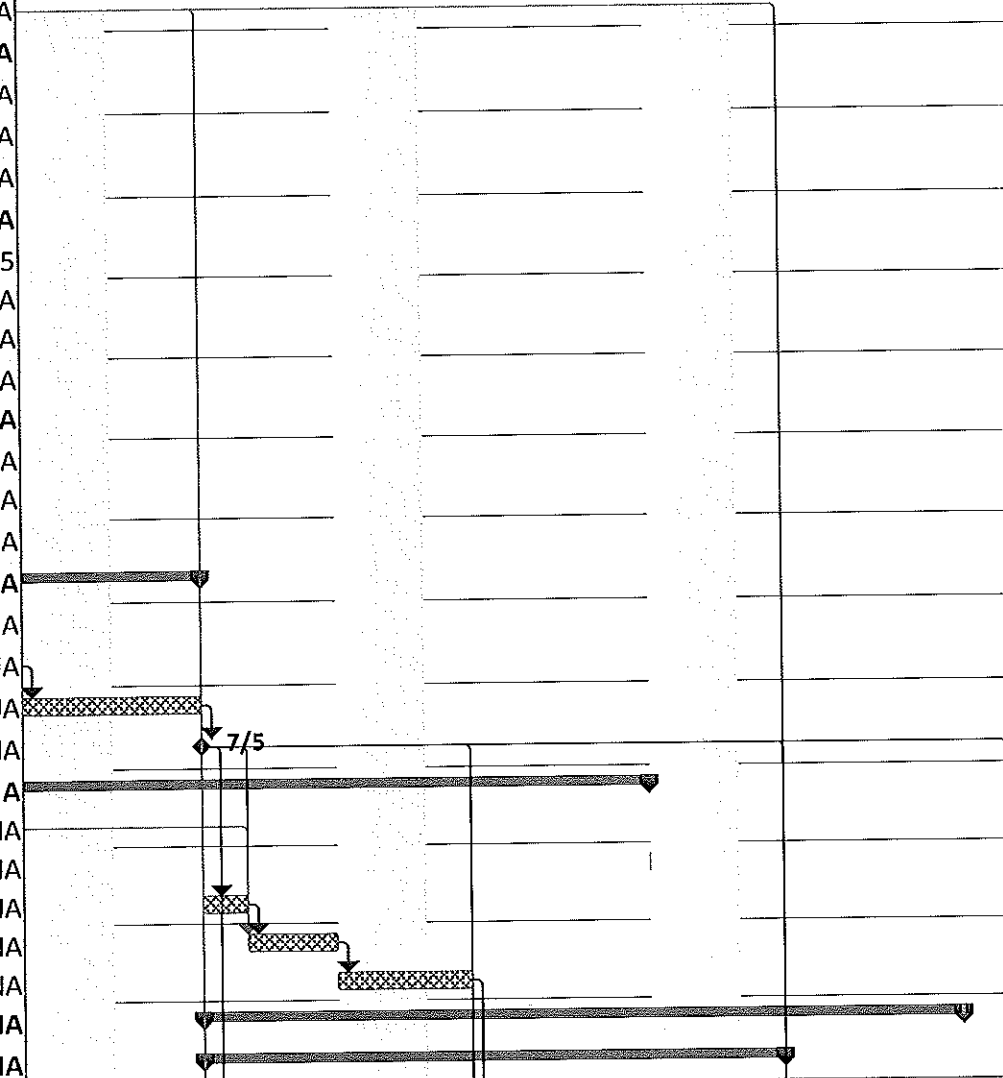
PBU Lead Time

Project: Craftsbury Schedule 3-7-1
Date: Tue 3/8/16

Task		Project Summary		Inactive Milestone		Manual Summary Rollup		Deadline
Split		External Tasks		Inactive Summary		Manual Summary		Critical
Milestone		External Milestone		Manual Task		Start-only		Critical Split
Summary		Inactive Task		Duration-only		Finish-only		Progress

ID	Task Mo	Task Name	Duration	Start	Finish	Predecessors	Successors	Actual Start	Actual Finish	2016																	
										July 3					July 10					July 17				July 24			
										Sat	Sun	Mon	Tue	Wed	Thu	Fri	Sat	Sun	Mon	Tue	Wed	Thu	Fri	Sat	Sun	Mon	Tue
36	✓	Guardrail Award	0 days	Fri 12/18/15	Fri 12/18/15	2	37	Fri 12/18/15	Fri 12/18/15																		
37	✓	Prepare Rail Submittal	14.86 days	Mon 12/21/15	Mon 1/25/16	36	38	Mon 12/21/15	Mon 1/25/16																		
38	✓	Guardrail Submittal	0 days	Mon 1/25/16	Mon 1/25/16	37	39	Mon 1/25/16	Mon 1/25/16																		
39		Guardrail Approval Period	11.43 day	Tue 1/26/16	Mon 2/22/16	38	40	NA	NA																		
40		Guardrail Lead Time	28.57 day	Tue 2/23/16	Mon 5/2/16	39	41	NA	NA																		
41		Guardrail On Site	0.71 days	Tue 5/3/16	Wed 5/4/16	40		NA	NA																		
42		Pile Drive Equipment	19.14 day	Mon 2/1/16	Thu 3/17/16			Mon 2/1/16	NA																		
43		Award	0 days	Mon 2/1/16	Mon 2/1/16	2	44	Mon 2/1/16	NA																		
44		Prepare Weap submittal	3.57 days	Mon 2/1/16	Tue 2/9/16	43	45	NA	NA																		
45		Submit	0 days	Tue 2/9/16	Tue 2/9/16	44	46	NA	NA																		
46		Review and Approve weap	11.43 day	Thu 2/18/16	Thu 3/17/16	45	77,88	NA	NA																		
47		Rapid Set Concrete	12.14 day	Tue 3/15/16	Wed 4/13/16			Tue 3/15/16	NA																		
48		Submit Mix Design	0 days	Tue 3/15/16	Tue 3/15/16	2	49	Tue 3/15/16	NA																		
49		Review and Approve Mix	11.43 day	Tue 3/15/16	Mon 4/11/16	48	50	NA	NA																		
50		Test Rapid Set	0.71 days	Tue 4/12/16	Wed 4/13/16	49		NA	NA																		
51		New Pavement	35.71 day	Mon 12/21/15	Wed 3/16/16			Mon 12/21/15	NA																		
52	✓	Award Pavement	0 days	Mon 12/21/15	Mon 12/21/15	2	53	Mon 12/21/15	Mon 12/21/15																		
53		Prepare Submittal	28.57 days	Mon 12/21/15	Fri 2/26/16	52	54	NA	NA																		
54		Submit Mix Design	0 days	Fri 2/26/16	Fri 2/26/16	53	55	NA	NA																		
55		Approve Mix	7.14 days	Mon 2/29/16	Wed 3/16/16	54		NA	NA																		
56		Erection Plan	40 days	Fri 12/18/15	Thu 3/24/16			NA	NA																		
57		Prepare Plan	28.57 days	Fri 12/18/15	Thu 2/25/16	2	58	NA	NA																		
58		Submit Plan	0 days	Thu 2/25/16	Thu 2/25/16	57	59	NA	NA																		
59		Review and Approve	11.43 day	Fri 2/26/16	Thu 3/24/16	58		NA	NA																		
60		Sign Package	3.5 days	Mon 6/27/16	Tue 7/5/16			NA	NA																		
61		Layout for Signs	0.5 days	Mon 6/27/16	Mon 6/27/16	2,6,9,12	62	NA	NA																		
62		Dig Safe	2 days	Mon 6/27/16	Fri 7/1/16	61	63	NA	NA																		
63		Installing Signs	1 day	Fri 7/1/16	Tue 7/5/16	62	64	NA	NA																		
64		Sign Package Complete	0 days	Tue 7/5/16	Tue 7/5/16	63	73,77,84,88,69,	NA	NA																		
65		Work Perform Prior to shut down	61.79 days	Thu 2/18/16	Fri 7/15/16			Thu 2/18/16	NA																		
66		Saw cut trees and Brush	2 days	Thu 2/18/16	Tue 2/23/16		69	Thu 2/18/16	NA																		
67		Preconstruction Meeting With RE & RME	0.5 days	Fri 7/15/16	Fri 7/15/16			NA	NA																		
68		Install EPSC measures	1 day	Tue 7/5/16	Wed 7/6/16	64	69	NA	NA																		
69		Grub Site	1 day	Wed 7/6/16	Fri 7/8/16	66,64,68	70	NA	NA																		
70		Remove Asphalt	1 day	Fri 7/8/16	Mon 7/11/16	69	73	NA	NA																		
71	◆	Pre Excavation Integral Abutments	9.5 days	Tue 7/5/16	Fri 7/22/16			NA	NA																		
72		West Bound Lane	6.2 days	Tue 7/5/16	Mon 7/18/16			NA	NA																		

Vermont Agency of Transportation
Reviewed by: A. Gammell
Date: 4-7-16
 CONFORMING
 CONFORMING AS NOTED
 NON-CONFORMING - RESUBMIT



Project: Craftsbury Schedule 3-7-1
Date: Tue 3/8/16

Task		Project Summary		Inactive Milestone		Manual Summary Rollup		Deadline	
Split		External Tasks		Inactive Summary		Manual Summary		Critical	
Milestone		External Milestone		Manual Task		Start-only		Critical Split	
Summary		Inactive Task		Duration-only		Finish-only		Progress	

ID	Task Mo	Task Name	Duration	Start	Finish	Predecessors	Successors	Actual Start	Actual Finish	2016																	
										July 3					July 10					July 17				July 24			
										Sat	Sun	Mon	Tue	Wed	Thu	Fri	Sat	Sun	Mon	Tue	Wed	Thu	Fri	Sat	Sun	Mon	Tue
105		Form up Voids For Concrete	1 hr	Sat 7/30/16	Sat 7/30/16	104	109,110		NA	NA																	
106		East Abutment	2.21 days	Fri 7/29/16	Mon 8/1/16				NA	NA																	
107		Excavate for Abutments	5 hrs	Fri 7/29/16	Sat 7/30/16	100,103	108		NA	NA																	
108		Install Precast Abutment	5 hrs	Sat 7/30/16	Sat 7/30/16	107,104	109		NA	NA																	
109		Form up Voids For Concrete	1 hr	Sat 7/30/16	Sat 7/30/16	108,105	110		NA	NA																	
110		Pour Concrete In Voids in both abutments	4 hrs	Sat 7/30/16	Sat 7/30/16	109,105	111		NA	NA																	
111		Concrete Cure	16 hrs	Sat 7/30/16	Mon 8/1/16	110	113		NA	NA																	
112		Pre-Fabricate Bridge Units	16.36 day	Mon 8/1/16	Wed 8/17/16				NA	NA																	
113		Set PBU 1	4 hrs	Mon 8/1/16	Mon 8/1/16	111	114		NA	NA																	
114		Set PBU 2	3 hrs	Mon 8/1/16	Mon 8/1/16	113	115		NA	NA																	
115		Set PBU 3	4 hrs	Mon 8/1/16	Mon 8/1/16	114	116,121		NA	NA																	
116		Form Up Voids For Concrete	4 hrs	Mon 8/1/16	Tue 8/2/16	115	117		NA	NA																	
117		Pour Rapid Set Concrete in Voids	4 hrs	Tue 8/2/16	Tue 8/2/16	116	118		NA	NA																	
118		Concrete Cure	16 hrs	Tue 8/2/16	Wed 8/3/16	117	119		NA	NA																	
119		Install spray applied membrane	10 hrs	Wed 8/3/16	Thu 8/4/16	118	120		NA	NA																	
120		Backfill back walls	10 hrs	Thu 8/4/16	Thu 8/4/16	119	130		NA	NA																	
121		Form and Tie Wing Walls	24 hrs	Mon 8/1/16	Wed 8/3/16	115	122		NA	NA																	
122		Pour Wing Walls	8 hrs	Wed 8/3/16	Thu 8/4/16	121	123		NA	NA																	
123		Cure Wing Walls	168 hrs	Thu 8/4/16	Tue 8/16/16	122	124		NA	NA																	
124		Strip Wing Walls Forms	4 hrs	Tue 8/16/16	Tue 8/16/16	123	125,126		NA	NA																	
125		Water Repellant, Silane	2 hrs	Tue 8/16/16	Tue 8/16/16	124	128,126		NA	NA																	
126		Backfill Wing walls	12 hrs	Tue 8/16/16	Wed 8/17/16	124,125	130		NA	NA																	
127		Guardrail Work	0.71 days	Thu 8/18/16	Fri 8/19/16				NA	NA																	
128		Install Guardrail System	10 hrs	Thu 8/18/16	Fri 8/19/16	132,125	137		NA	NA																	
129		Paving	1.86 days	Wed 8/17/16	Fri 8/19/16				NA	NA																	
130		Finish Grade Road	6 hrs	Wed 8/17/16	Wed 8/17/16	120,126	131		NA	NA																	
131		Pave Road Base	4 hrs	Wed 8/17/16	Thu 8/18/16	130	132		NA	NA																	
132		Pave Top	4 hrs	Thu 8/18/16	Thu 8/18/16	131	133,128,137		NA	NA																	
133		Joint Sealer Hot Poured	4 hrs	Thu 8/18/16	Thu 8/18/16	132	134		NA	NA																	
134		Install Asphaltic Plug	4 hrs	Thu 8/18/16	Thu 8/18/16	133	135		NA	NA																	
135		Line Striping	4 hrs	Thu 8/18/16	Fri 8/19/16	134	136		NA	NA																	
136		Paving Complete	0 hrs	Fri 8/19/16	Fri 8/19/16	135			NA	NA																	
137		Open Bridge To Traffic	0 hrs	Fri 8/19/16	Fri 8/19/16	128,132	139		NA	NA																	
138		Project Clean Up and Demo.	19 days	Fri 8/19/16	Fri 9/30/16				NA	NA																	
139		Remove all EPSC items	5 days	Fri 8/19/16	Mon 8/29/16	137	140		NA	NA																	
140		Seed and mulch	7 days	Mon 8/29/16	Wed 9/14/16	139	141		NA	NA																	

Vermont Agency of Transportation
Reviewed by: A. Gammell
Date: 4-7-16
 CONFORMING
 CONFORMING AS NOTED
 NON CONFORMING - RESUBMIT

Project: Craftsbury Schedule 3-7-1 Date: Tue 3/8/16	Task		Project Summary		Inactive Milestone		Manual Summary Rollup		Deadline	
	Split		External Tasks		Inactive Summary		Manual Summary		Critical	
	Milestone		External Milestone		Manual Task		Start-only		Critical Split	
	Summary		Inactive Task		Duration-only		Finish-only		Progress	

